



NewTechWood

1. Product Name

- NewTechWood Ultrashield Naturale Composite Cladding-Siding

2. Manufacturer

NewTechWood America, Inc.
19111 Walden Forest Drive
Suite B
Houston Texas 77346
Phone: 281-570-6450
Fax: 281-661-1167
Email: richard@newtechwood.com
Web: www.newtechwood.com

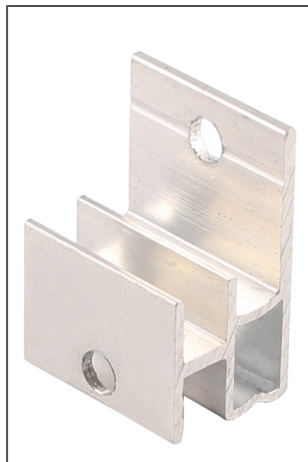
3. Product Description

Basic Use

Used for interior and exterior applications, the Ultrashield Naturale Composite Cladding-Siding is a solution for a wood-like façade without the maintenance. It can both cover up unsightly areas and accent concrete buildings providing a contemporary look. It can also be used for ceilings and soffits as well as siding.

The tongued board, **US09**, is secured with 6063 aluminum clips, which act as the groove in the system. Also available are outside corner trim, inside corner trim, butt joint trim, and end cap trim pieces—all made with the encased composite material, see Accessories/Options for the item numbers and sizes. See images for fastener, fascia and all accessories' installation examples.

AW08 fasteners secure the US09 boards as a tongue-and-groove system



Composition and Materials

The composite material is comprised of HDPE plastic and hardwood chips. The composite material is encased in a 0.5–0.7 mm plastic shell with UV and stain inhibitors additives to ASTM G154, called Ultrashield, which is a proprietary blend of plastics.

The T-7 End Plugs are composed of rubber.

Features and Benefits

- Easier to cut than comparably-sized all-wood planks
- Maintains color/does not need to be stained or maintained
- Ultrashield technology protection

Dimensions

US09 tongue and groove board:

Width × depth × length: 5½ × ½ inches × 16 feet.
(142 × 13 mm × 4.87 m)

AW2 track secures the US09 boards on the lower perimeter





Colors

- Brazilian Ipe
- Spanish Walnut
- Westminster Gray
- Peruvian Teak
- Roman Antique
- Hawaiian Charcoal

Safety Data Sheets

SDS information is available [here](#).



Accessories/Options

- **AW08:** siding clips (90 pieces covers 50 square feet)
0.78 × 0.59 × 1.10 inches (20 × 15 × 28 mm; installed on the joists and used as the connection between each US09 board)
- **AW02:** starter strips (3 feet and 9 feet sizes)
0.59 × 0.57 inch (15 × 14.5 mm); designed to fix the first cladding on the joist
- **T-7 Plug:** rubber end plugs (50 per bag)
0.70 × 0.31 inch (18 × 8 mm); installed on the joists to support the US09 when installing the last board
- **US44:** end fascia (8 feet lengths)
1.8 × 1.7 inch (46.2 × 44.2 mm)
- **US46:** joint fascia (8 feet lengths)
3.1 × 1.0 inch (79 × 26.7 mm)
- **US46:** outside corner fascia (8 feet lengths)
2.2 × 2.2 inch (58.2 × 58.2 mm)
- **US47:** inside corner fascia (8 feet lengths)
2.8 × 2.8 inch (71.5 × 71.5 mm)

4. Technical Data

Applicable Standards

ASTM International (ASTM)

- **ASTM D7032** Standard Specification for Establishing Performance Ratings for Wood-Plastic Composite and Plastic Lumber Deck Boards, Stair Treads, Guards, and Handrails
- **ASTM G154** Standard Practice for Operating Fluorescent Ultraviolet (UV) Lamp Apparatus for Exposure of Nonmetallic Materials

International Code Council (ICC)

- **ICC-ES AC 174** Acceptance Criteria for Deck Board Span Ratings and Guardrail Systems (Guards and Handrails), approved January 2012, section 3.4, 3.7, 3.9, 3.11 and 4.1

T-7 end plugs support the last US09 boards



5. Installation

Manufacturer installation instructions are available [here](#).

Installation videos available [here](#) and [here](#).

6. Availability and Cost

Contact manufacturer for availability and pricing.

7. Warranty

A 25-year limited warranty is offered.

8. Maintenance

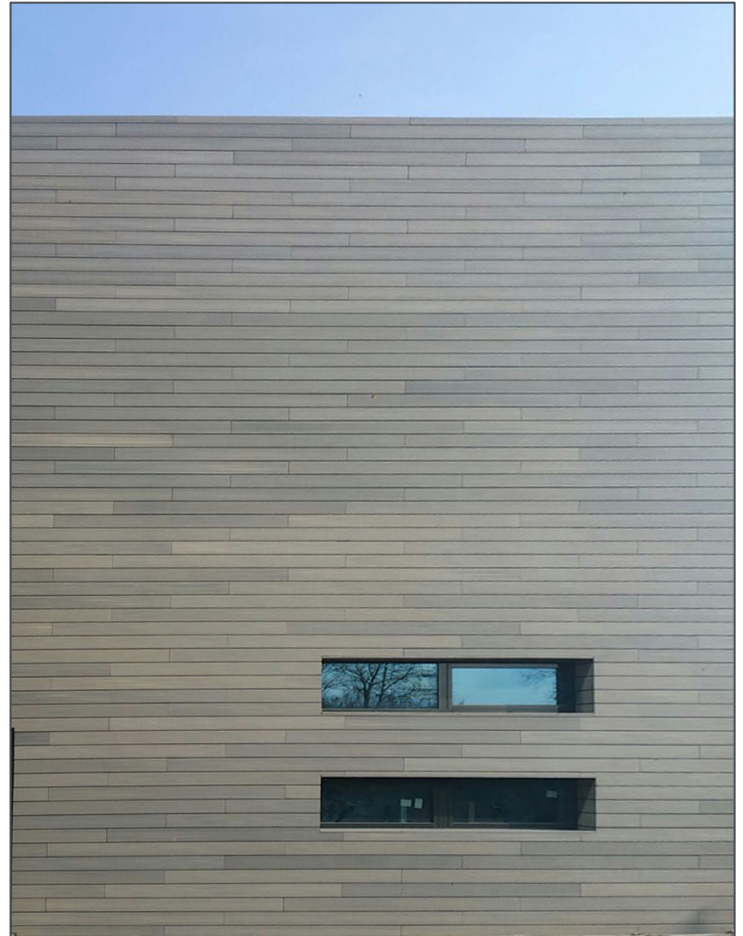
Clean with soap and water. Can be pressure washed on a low setting.

9. Technical Services

NewTechWood America, Inc. offers telephone support.

10. Filing Systems

- ConstructConnect
- Additional product information is available from the manufacturer upon request ↪



End Fascia US44

Joint Fascia US45

OuterCorner US46

Inner Corner US47

